

## Haus 29c

Untergeschoss

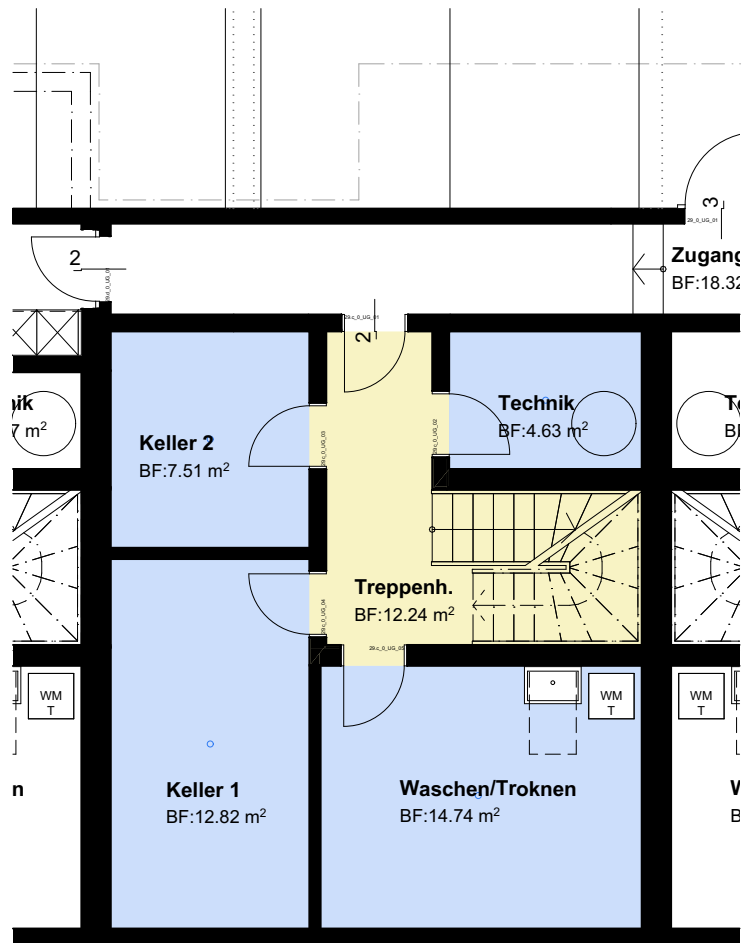
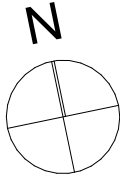
Mst: 1:100

6.5 Zimmer

Grundstücksfläche: 201.53 m<sup>2</sup>

Wohnfläche: 199.80 m<sup>2</sup>

Keller/Technik: 39.70 m<sup>2</sup>



## Haus 29c

Erdgeschoss

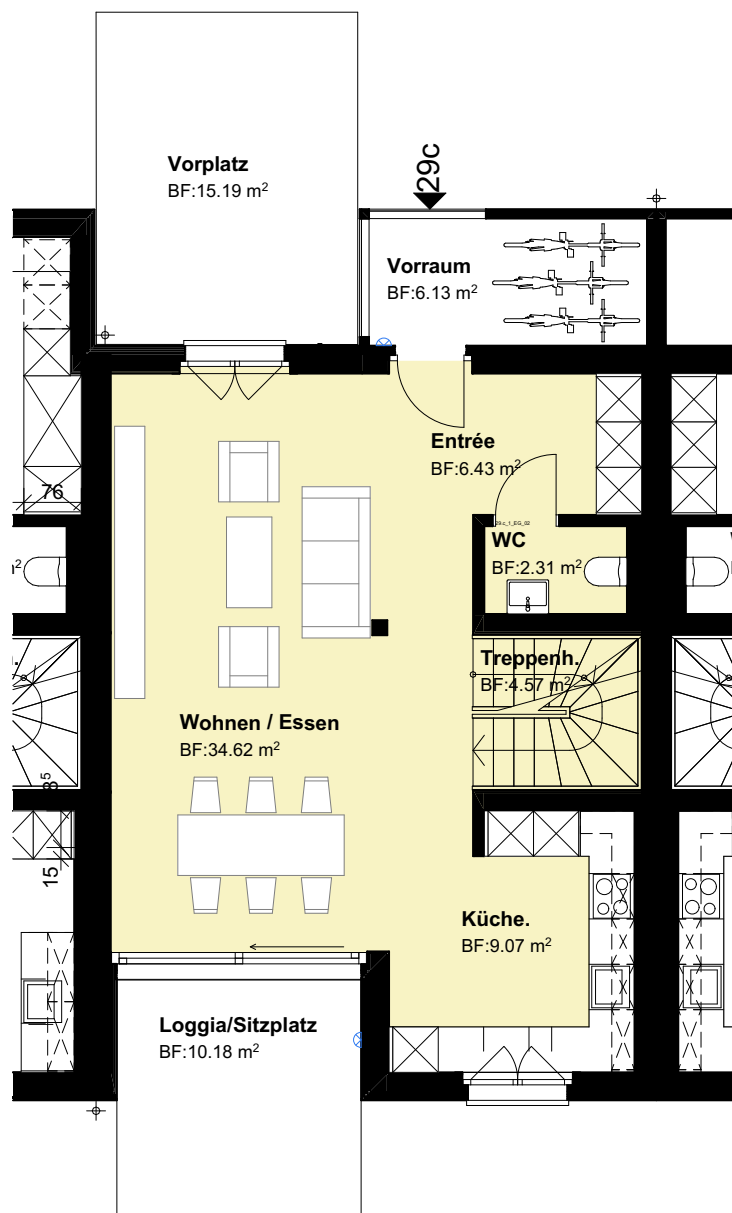
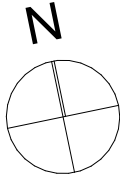
Mst: 1:100

6.5 Zimmer

Grundstücksfläche: 201.53 m<sup>2</sup>

Wohnfläche: 199.80 m<sup>2</sup>

Keller/Technik: 39.70 m<sup>2</sup>



## Haus 29c

Erdgeschoss/Umgebung

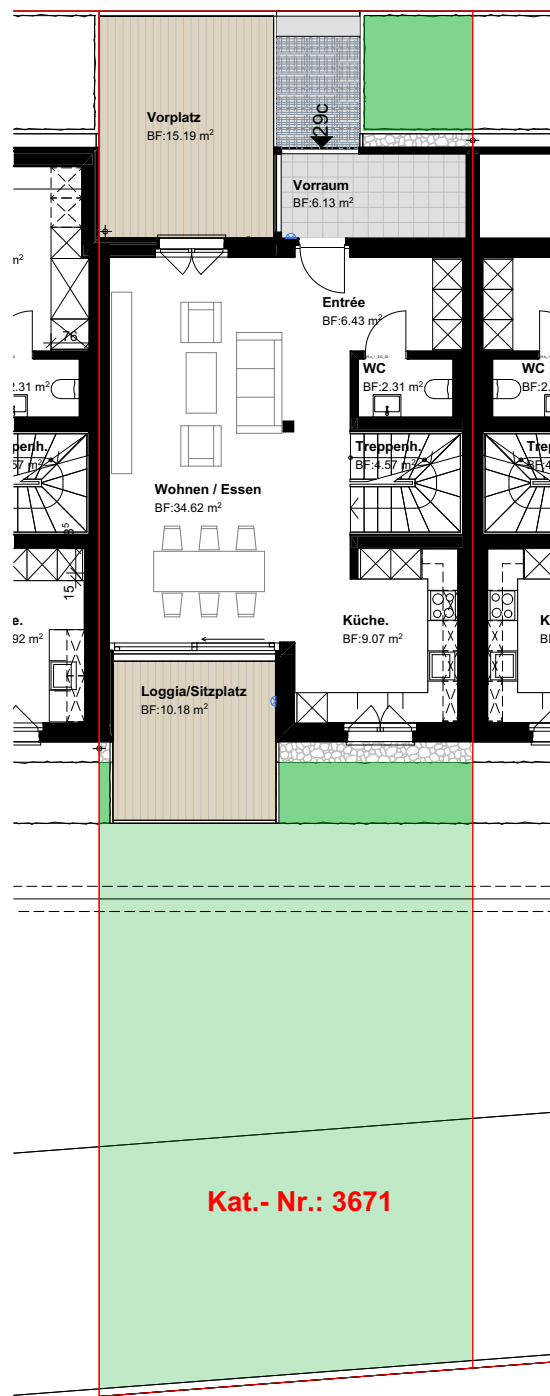
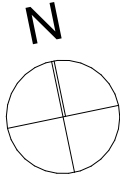
Mst: 1:150

6.5 Zimmer

Grundstücksfläche: 201.53 m<sup>2</sup>

Wohnfläche: 199.80 m<sup>2</sup>

Keller/Technik: 39.70 m<sup>2</sup>



## Haus 29c

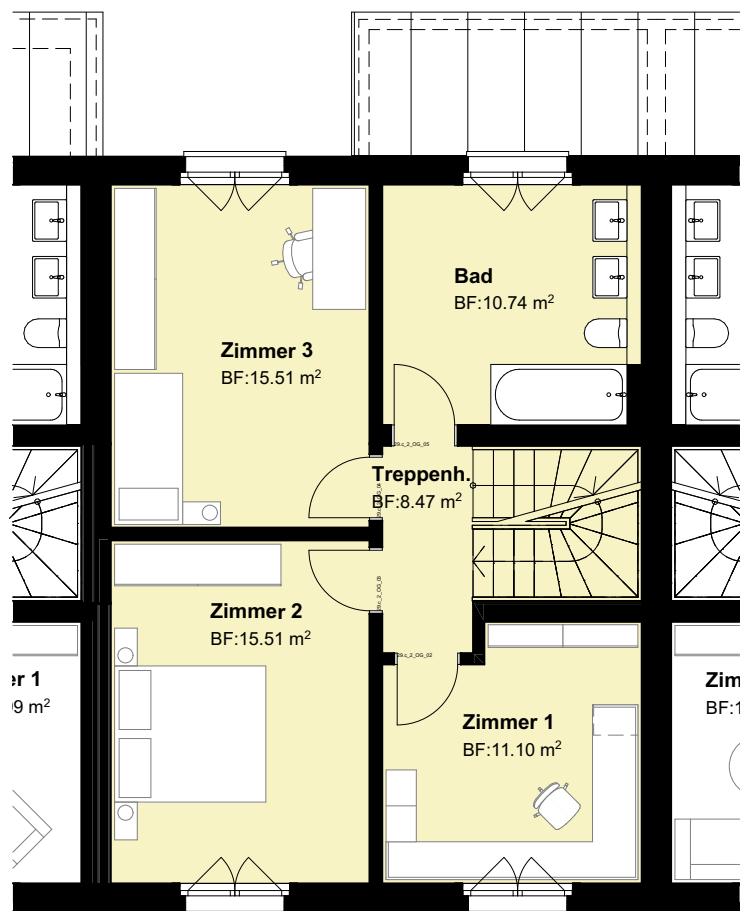
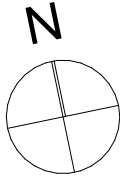
Obergeschoss  
Mst: 1:100

6.5 Zimmer

Grundstücksfläche: 201.53 m<sup>2</sup>

Wohnfläche: 199.80 m<sup>2</sup>

Keller/Technik: 39.70 m<sup>2</sup>



## Haus 29c

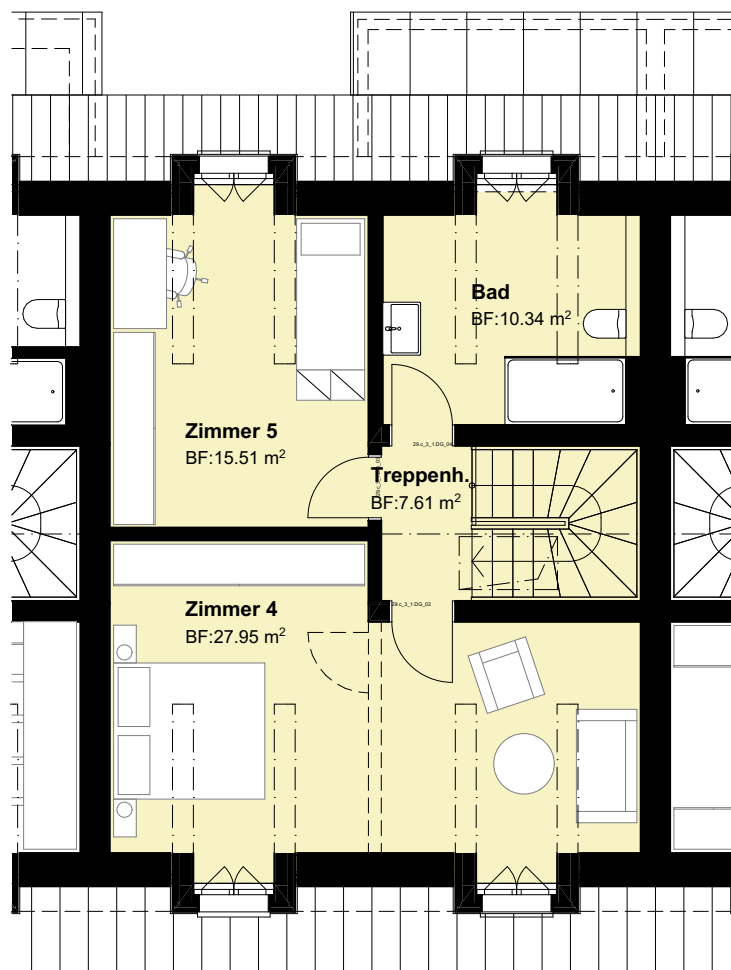
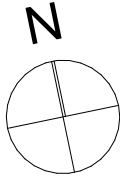
1. Dachgeschoss  
Mst: 1:100

6.5 Zimmer

Grundstücksfläche: 201.53 m<sup>2</sup>

Wohnfläche: 199.80 m<sup>2</sup>

Keller/Technik: 39.70 m<sup>2</sup>



## Haus 29c

2. Dachgeschoss  
Mst: 1:100

6.5 Zimmer

Grundstücksfläche: 201.53 m<sup>2</sup>

Wohnfläche: 199.80 m<sup>2</sup>

Keller/Technik: 39.70 m<sup>2</sup>

